

Annual Impact Report 2023-24

ST. ANDREW'S LUTHERAN CHURCH



Hi Friends,

This isn't our annual report, it's our Annual IMPACT Report. That's because St. Andrew's worship, programs, events, staff, members, and congregation make an impact inside and outside the walls of our buildings every single day!

As we reflect on the past year, we celebrate the incredible ways our community has flourished together. Each of you has contributed to the growth of our church, fostering an environment filled with faith, hope, and love.

In challenging times, we've leaned on each another, and in moments of joy, we've rejoiced together. As we move forward, let's continue to nurture our relationships, embrace new opportunities for service, and flourish in our faith.

As you peruse this report* you'll see the myriad of ways we are flourishing. Our year at a glance is shared in numbers not to boast or brag, but to convey the variety of ways in which lives are impacted.

With gratitude for your generosity and excitement for the future,



Michael Carlson

Rev. Michael D. Carlson
Lead Pastor

* All figures in this report are for fiscal year 2023-24
(September 1, 2023 through August 31, 2024)



**"I am the vine; you are the branches.
Those who abide in me and I in them
bear much fruit."**

JOHN 15:5

WORSHIP & MUSIC

Our Christ-centered worship is offered in two different music and service styles—traditional and contemporary.

3,175 Average weekly worship attendance**

115 St. Andrew's choir members

20,000+ Hours of time choir members give to participate

74 Children and youth in choirs

9,443 Attended Christmas services**

14,418 Attended Holy Week and Easter services**

262 Christmas Festival musicians

** Stats combine in-person
and online attendance.



CHILDREN, YOUTH & ADULT EDUCATION

Adult Bible studies, LIFEU (Living in Faith Everyday), kids/youth programs, and St. Andrew's Preschool help people of all ages connect while growing stronger in their faith.

- 364** Students in Confirmation (Grades 6-9)
- 401** Children attended Vacation Bible School
- 361** Children enrolled in Sunday School
- 1,500** Total attendance at LIFEU
- 150** Participants in 12 LIFEU small groups
- 115** Children in our preschools
- 2,880** Crayons given to kids on Easter morning
- 41** Teen camp counselors at Confirmation Camp
- 1,848** Volunteer hours by Confirmation group guides
- 5,800** Meals served at the Wednesday Night Dinner (which is prior to evening programs)



NOTES ON FINANCIAL RESULTS

Our Commitment

Each gift we receive is stewarded for the best possible outcome. At fiscal year ending August 31, 2024, we finished “in the black” for the 17th consecutive year, continuing our trend of fiscal responsibility and faithful stewardship.

We are dedicated to not take on any new debt and we will continue to honor that commitment. Due to the generosity of our donors in response to our 100th Anniversary campaign, we were able to successfully pay off the remaining mortgage balance in fiscal year 2022-23.

Benevolence Activity in 2023-24

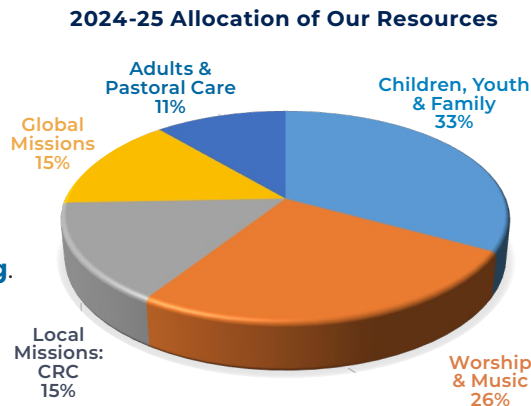
\$174,310, primarily from the General Fund, provided international, national, and local ministries support. \$52,824 from the General Fund provided support to St. Andrew’s Global Missions. \$997,350 was received in designated gifts for the Community Resource Center, Mission Jamaica, Vision Slovakia, Habitat for Humanity, Bega Kwa Bega, and the Youth Fund.

Our Budget for 2024-25

Over \$9 million will flow through St. Andrew’s Lutheran Church in the upcoming fiscal year. Included in this total is income from fee-based programming and other resources of approximately \$2.7 million. Additionally, designated giving to our missions will contribute approximately \$859,000 to overall ministry. The remaining \$5,435,000 comprises our proposed annual operating income goal for 2024-25.

Who to Contact

Questions about the finances of St. Andrew’s Lutheran Church can be directed to Patricia Ingberg, Chief Financial Officer at pingberg@saintandrews.org.



ST. ANDREW'S LUTHERAN CHURCH

Year Ended August 31, 2024

Preliminary (subject to audit)

GENERAL FUND

REVENUE AND SUPPORT:	
General Offerings & Other Revenue	\$5,852,228
Departmental Ministries	1,316,144
	<u>7,168,372</u>
EXPENSES:	
Management and General:	
Salaries & Benefits	3,575,744
Other Administrative	1,457,874
Departmental Ministries	1,603,513
	<u>6,637,131</u>
Total Surplus/(Deficit)	<u>\$531,241</u>

RESTRICTED FUNDS

REVENUE AND SUPPORT:	
Restricted Ministries & Memorials*	\$1,839,652
Missions and Outreach	1,845,024
	<u>3,684,676</u>
EXPENSES/TRANSFERS:	
Restricted Ministries & Memorials	58,965
Missions and Outreach	2,040,973
Transfer to Assets**	162,109
	<u>2,262,048</u>
Total Surplus/(Deficit) including Transfer to Assets	<u>\$1,422,629</u>

*Includes an estate gift of \$1.5 million received during the fiscal year which was designated towards future building needs.

**\$162,109 transferred to assets utilizing designated gifts during the fiscal year.

General Fund excludes depreciation. General and Restricted Funds include departmental transfers.

Financial information presented represents funds flowing through St. Andrew's during fiscal year 2023-24. Audited financial statements will include reclassification of transfers, funds held for others, and deferred revenue.

PASTORAL CARE

- 82** Funerals led by St. Andrew's pastors (50% have been for non-members, often people with no religious affiliation)
- 10,000** People attended funerals at St. Andrew's
- 6,100** Guests have been served at funeral receptions
- 21** Weddings officiated by St. Andrew's pastors
- 96** Baptisms performed
- 4,000+** Pastoral care touch points (visits, calls, emails, and in-person connections)

MISSION & OUTREACH

- 550** Community events, meetings, concerts, and support groups held at St. Andrew's
- 635** Families served by the Community Resource Center (CRC)
- 27** Tons of food distributed by CRC
- 34,712** Clothing items provided by CRC
- 294** Senior citizens served by CRC
- 169** School supplies backpacks given to children in our community
- 4,600** Free Thursday Night Community Meals served
- 400+** People have served with Mission Jamaica, bringing 300 suitcases of supplies
- 8** Students sponsored to attend school in Tanzania

